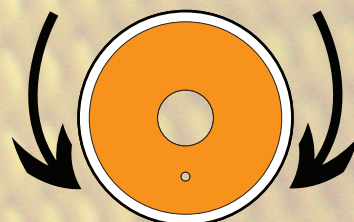
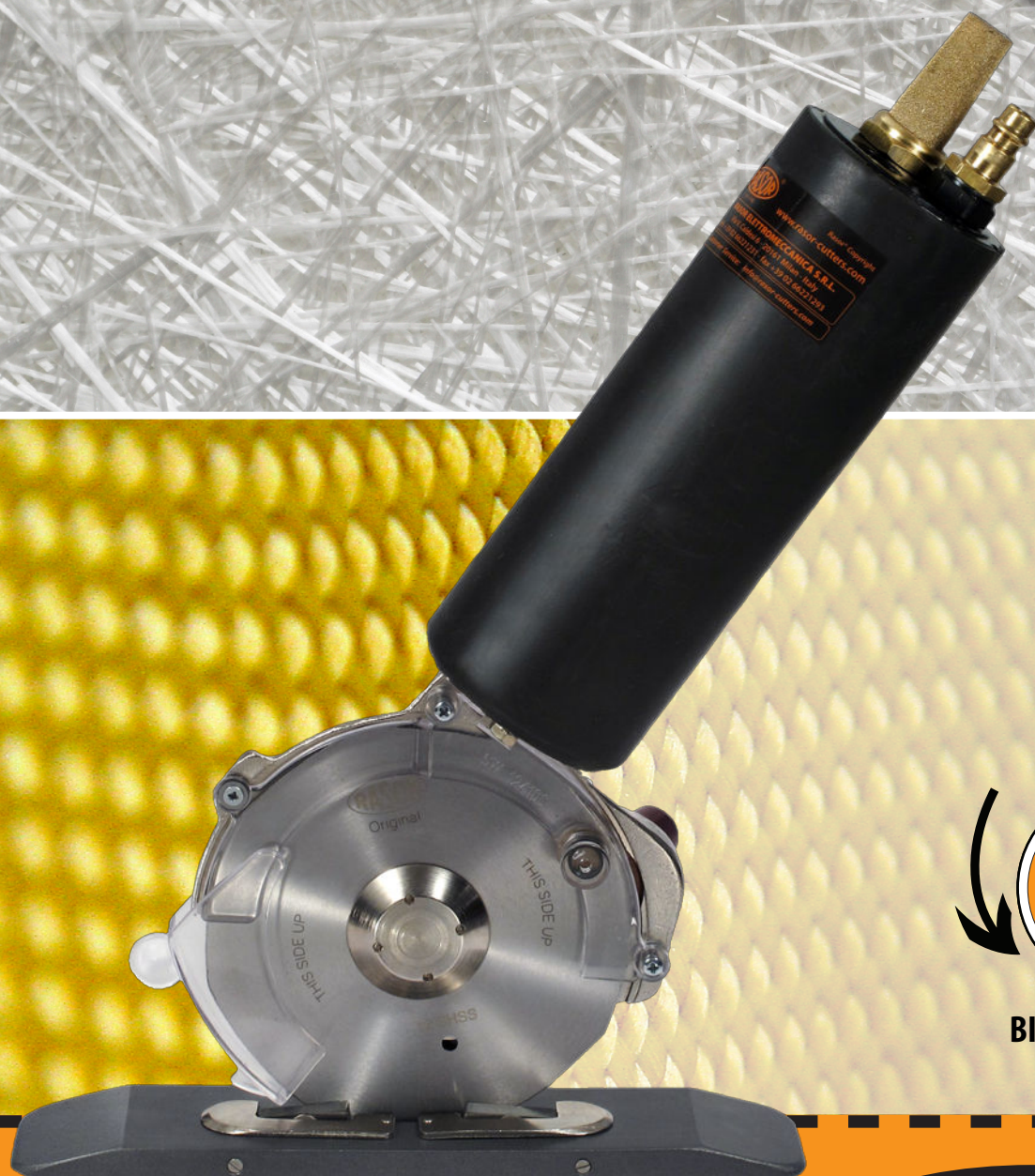




100% MADE IN ITALY

2014
SERIES



BI-DIRECTIONAL



1946

FP120DT

PNEUMATIC BIDIRECTIONAL CUTTING UNIT

FP120DT. Professional super-powered pneumatic cutting unit for bidirectional cross-cut processes in Technical Textile & Composite applications.



1946

WHAT'S NEW:

Save time with bidirectional cutting system

New powerful pneumatic motor

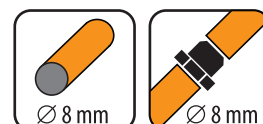
Incredible torque

Low-friction Teflon® coated foot

Easy fixing structure for O.E.M applications



PNEUMATIC BIDIRECTIONAL CUTTING UNIT FP120DT



minimum recommended

TECHNICAL DETAILS:

Blade diameter: 120 mm (4.7"), with double hard metal counterblade

Blade equipped: 12SHSS, 8-edges, HSS steel

Blade speed: 700 r.p.m.*

Cutting ability: up to 50 mm (2"), bidirectional

Power: 645 W (at nominal air supply conditions*)

Torque at max. power: 1.6 Nm

Operating pressure: 6 bar nominal* (± 1 bar) lubricated air supply

Air consumption: 18 l/sec*

Net weight: 4400 g

Total weight (with packing box): 6100 g

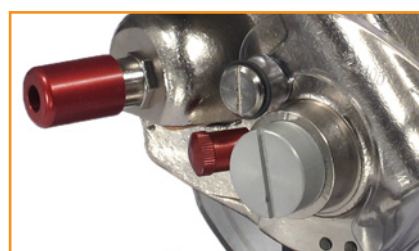
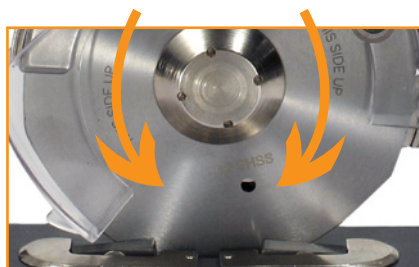
Sound pressure: 72 dB (EN ISO 15744)*

Vibration Level: 1,36 m/sec² (ISO 8662)*

Minimum brightness for working operations: LUX 200

Temperature range: 0 – 55 C

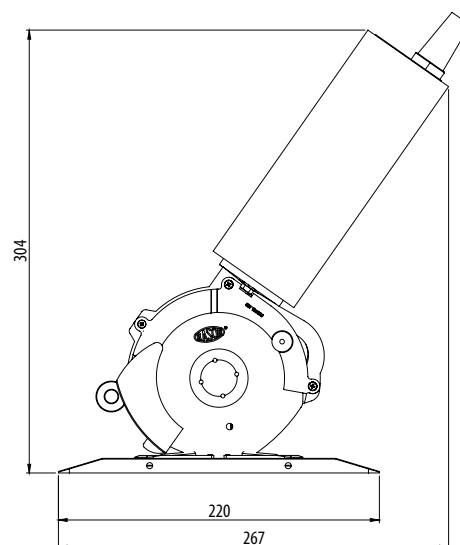
Umidity range: 10 – 95% without condensate



Sharpening device



Rasor recommend to use only dry air lubricated with special Rasor VG 5 pneumatic oil



Dimension layout

*The reported data are collected at a pressure of 6 bar (ISO 2787: 1984), recommended operating pressure.

BLADES AVAILABLE:

12SHSS, 120 mm 8-edges, HSS steel | **12CSW**, 120 mm circular, EXTRA steel | **12DHSS**, 120 mm 12-edges, HSS steel | **12SHSSTF**, 120 mm 8-edges, HSS steel Teflon® coated | **12SHSSTN**, 120 mm 8-edges, HSS steel Titanium coated | **12DHSTN**, 120 mm 12-edges, HSS steel Titanium coated | **12SMD**, 120 mm 8-edges, Carbide (Widia®)



FOLLOW US:



RASOR ELETTROMECCANICA SRL

Via Vincenzo Caldesi 6

20161 Milan · Italy

ph. +39 02 66 22 12 31

fax +39 02 66 22 12 93

info@rasor-cutters.com

www.rasor-cutters.com